

TURNING

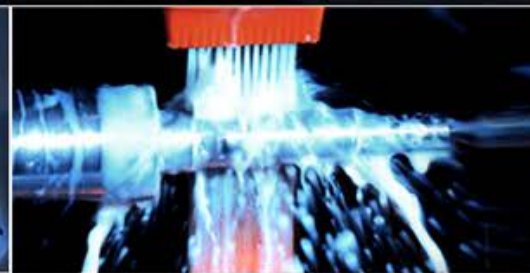
High precision and perfect turning!



Turning



Milling



Grinding

Turn our **Strengths** to your benefit!



Our strengths consist in

- ✓ being able to offer a wide range of machining possibilities
- ✓ manufacturing with optimised processes so that we can offer attractive prices
- ✓ producing above all small to medium lot sizes (30 to 1,000 ea)
- ✓ being reliable in keeping to deadlines
- ✓ assuring your requirements in terms of quality
- ✓ offering solutions as well as finished products



We offer 30 years of professional expertise

- ✓ in machining chuck-held and bar-fed turned parts
- ✓ in machining aluminium castings
- ✓ in machining turned forgings
- ✓ in machining thin-walled pipes
- ✓ in external cylindrical grinding
- ✓ in milling complex parts (4-axis and multi-side machining)
- ✓ in groove cutting



Quality principles

Recognising and fulfilling our customers' needs constitutes the prime objective of our company. We maintain constant close contact with our customers to always be up-to-date on new and changing requirements.

Quality refers not only to the product but also to technical and organisational processes, procedures, methods and means involved in manufacturing our products; quality also refers to all customer and supplier relationships.

We achieve quality by selecting safe processes in production together with quality control on modern, high-precision 2D and 3D measuring machines.

We guarantee our customers the very highest quality standard, safeguarded on the basis of our well-founded know-how and expertise, together with trained staff.

Production engineering

We guarantee high quality standards and decades of experience in cutting techniques



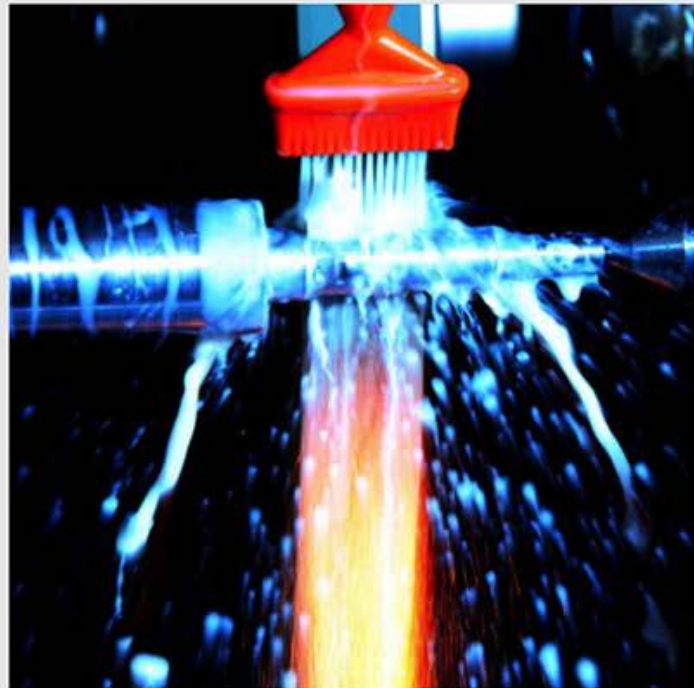
TURNING

- Production range from $\text{\O}5\text{-}220$ mm and up to 850 mm in length
- Optimum lot size 50-1500 ea
- Many different materials, e.g. sand casting, chill casting and die casting
- Machining of forged and soldered parts
- Production on turning lathes with C-axis and power-driven tools
- Vertical, with automatic blank feed
- Horizontal, as chuck-held and bar-feed machining, all machines with tailstock



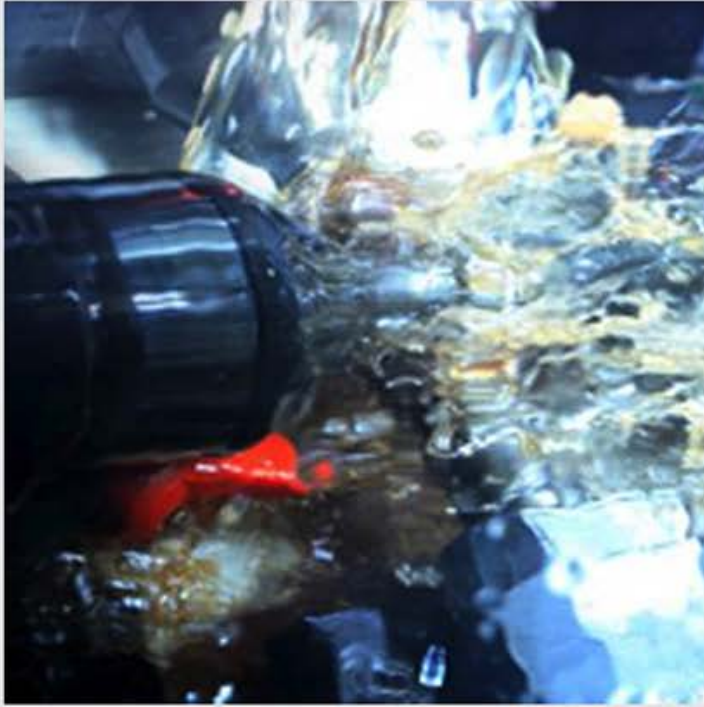
MILLING

- Workpieces up to a size of 400x300x300mm
- Optimum lot size 30-500 ea
- Many different materials, e.g. sand casting, chill casting and die casting
- Vertical 4-axis machining centres, partly with pallet changer and speeds of up to 16,000 rpm for machining aluminium
- Gear-cutting on Köpfer 160 machine



GRINDING

- On-centre grinding for diameters up to $\text{\O}300$ and up to 1000 mm in length
- Taper grinding
- Internal cylindrical grinding
- Optimum lot size 1-500 ea
- All steels and special alloys
- Machining on Swiss-made precision machines



OTHER MACHINING PROCESSES

We also offer:

- Gear cutting
- Knurling
- Pressing
- Welding

Surfaces and Materials

SURFACES

We offer a large number of surface treatment and machining processes.

- Chromium plating
- Nickel plating
- Zinc plating
- Chromating
- Anodising (all colours)
- Burnishing
- Oxidising
- Barrel finishing
- Glassbead blasting
- Case hardening
- Induction hardening
- Tempering

MATERIALS

- Machining steel
- Case-hardening and tempering steel
- High-quality steel
- Stainless steel
- Aluminium alloys
- Brass and similar copper alloys
- Plastics
- Special alloys

If you plan to work with other materials or if you have a special inquiry please contact us via phone +49 6123/ 185 30 00 or send us [request](#).

Possible uses

Gear manufacturing



- PTO shaft
- Planet carrier
- Worm gear housing and cover
- Planetary gear housing
- Motor flange

Electrical engineering



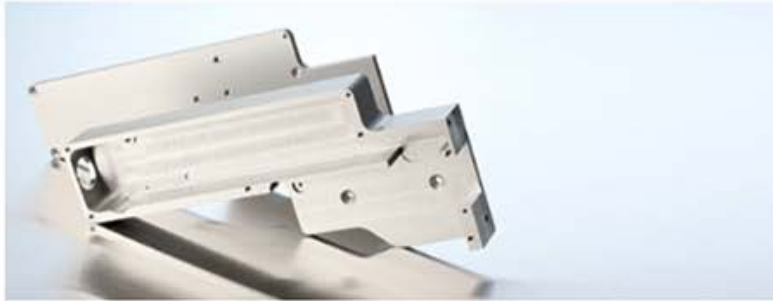
- Armature blank
- Motor shaft
- Rotor
- End shield
- Motor housing
- Cover hood

Security systems



- Force sensor
- Gear housing with cover for CCTV camera
- Rotary aperture for X-ray machines
- Fire alarm sensor housing

Printing



- Printer housing and cover

Paper cutting



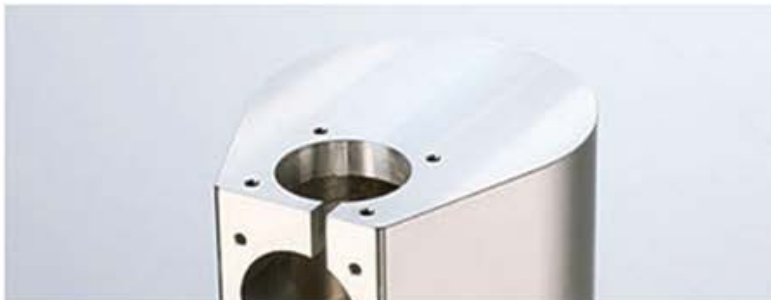
- Blade holder
- Shaft insert with air distribution
- Drive chassis

Turned parts



- Blank armature
- Motor shaft
- Rotor
- Rotary aperture for X-ray machines
- Motor flange
- End shield
- Blade holder
- Shaft insert with air distribution
- Motor housing
- Force sensor
- Fire alarm sensor housing
- PTO shaft
- Planet carrier
- Planetary gear housing

Milled parts



- Gear housing with cover for CCTV camera
- Worm gear housing and cover
- Drive chassis
- Cover hood
- Printer housing and cover

Ground parts



- Blank armature
- Motor shaft
- Rotor



Company

Team

We attach great importance to ensuring that all employees take on the tasks corresponding to their talents. Expanded by know-how and experience, these talents and skills become strengths. The ability to put such strengths to full use brings pleasure, satisfaction and success.

But it is only when all strengths are pooled that a first-class team emerges. Many thanks to every team member for contributing their strengths!

MANAGING DIRECTOR:

Murat Sahinbas

MANUFACTURING,:

Wolfgang Ring, rep. Manufacturing Marko Gutsch

QUALITY ASSURANCE:

Andreas Welsch

PROGRAMMING (SOLID WORKS / EDGE CAM):

Rainer Steinborn

History

The brothers Erich and Fred Engel founded Engel GmbH in Wiesbaden-Dotzheim on 1 April 1923 as a repair workshop for electronic appliances.

Thanks to their know-how, in next-to-no time they specialised in the production of electric motors and transformers, and developed the first Engel soldering gun in 1952. The company's lathe shop produced the lathed and milled parts needed to manufacture their products.

As a consequence of its ongoing expansion, in 1960 Engel and the workforce of 400 employees relocated to Wiesbaden-Schierstein.

The lathe shop also expanded and procured one of the first robot-controlled machining production systems available on the market in those days. On 19 February 1987, the lathe shop of Engel GmbH became an independent company with 25 employees, Engel Präzisions-Drehteile GmbH in Walluf. In the constant endeavour to be at the cutting edge of technology, investments were made in further CNC machines.

In 1996, Engel Präzisions-Drehteile GmbH moved to a new building in Walluf, Am Klängenweg 7, where today it has production facilities covering approx. 2,000 m².

In 2011 EPD invested massively in measurement technology to provide best possible quality and service for its customers.

For a more efficient cost structure and better business processes a new ERP system was implemented in 2013. Additionally new measuring systems were purchased to ensure a high quality level.

2014 Murat Sahinbas became new CEO. The machinery was expanded with numerous investments in CAD/CAM systems, a new mill center, two drill centers and a new saw.

Today EPD Präzisions-Drehteile GmbH has 20 skilled worker and apx. 2200 qm area at its location in Walluf to produce high quality products for companies all over the world.